

FOR SALE - ARBUCKLE VICINITY, COLUSA COUNTY, CALIFORNIA

MATURE PRODUCING ALMOND ORCHARDS

2 Parcels ~ ±39 Acres Total



**SITE
±29 ACRES**

**SITE
±10 ACRES**

TO INTERSTATE 5

NEWMARK

WILL BLUCHER *Managing Director*
t 916-569-2340 / will.blucher@nrmk.com
CA RE LICENSE #01811673

KEN NOACK, JR. *Senior Managing Director*
t 916-747-6442 / ken.noack@nrmk.com
CA RE LICENSE #00777705

PROPERTY HIGHLIGHTS

Price: \$1,053,000 (\$27,000 per acre)

Located in the heart of Colusa County agricultural district

±39 total acres of mature almond orchards (±29 acres in 5th leaf / ±10 acres in 10th leaf)

2 district discharge water meters to service the orchards*

Proximity to the Interstate 5 transportation corridor

APN#'s: 021-250-033 (29 acres), 021-250-042 (10 acres)

Located 1/4 mile west of the intersection of Marine Avenue and Wildwood Road

**Access to meter #1 as a condition of this land acquisition*



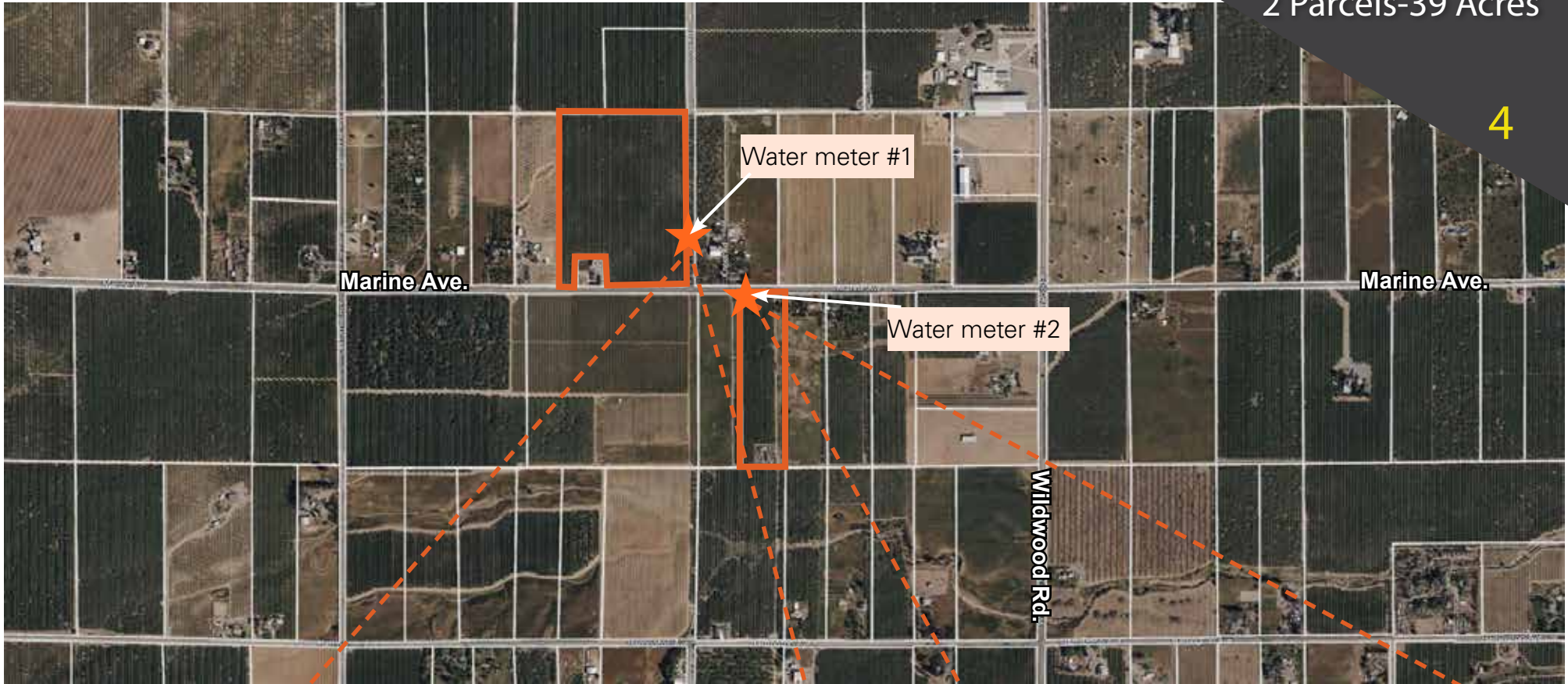
FOR SALE
Arbuckle Vicinity
2 Parcels-39 Acres

2

PARCEL AERIAL

FOR SALE
Arbuckle Vicinity
2 Parcels-39 Acres

4



*Approximate locations

NEWMARK

GALLERY

FOR SALE
Arbuckle Vicinity
2 Parcels-39 Acres

5



Watermeter #2



29 acre orchard



29 acre orchard



Watermeter #1



10 acre orchard



10 acre orchard



Watermeter #1

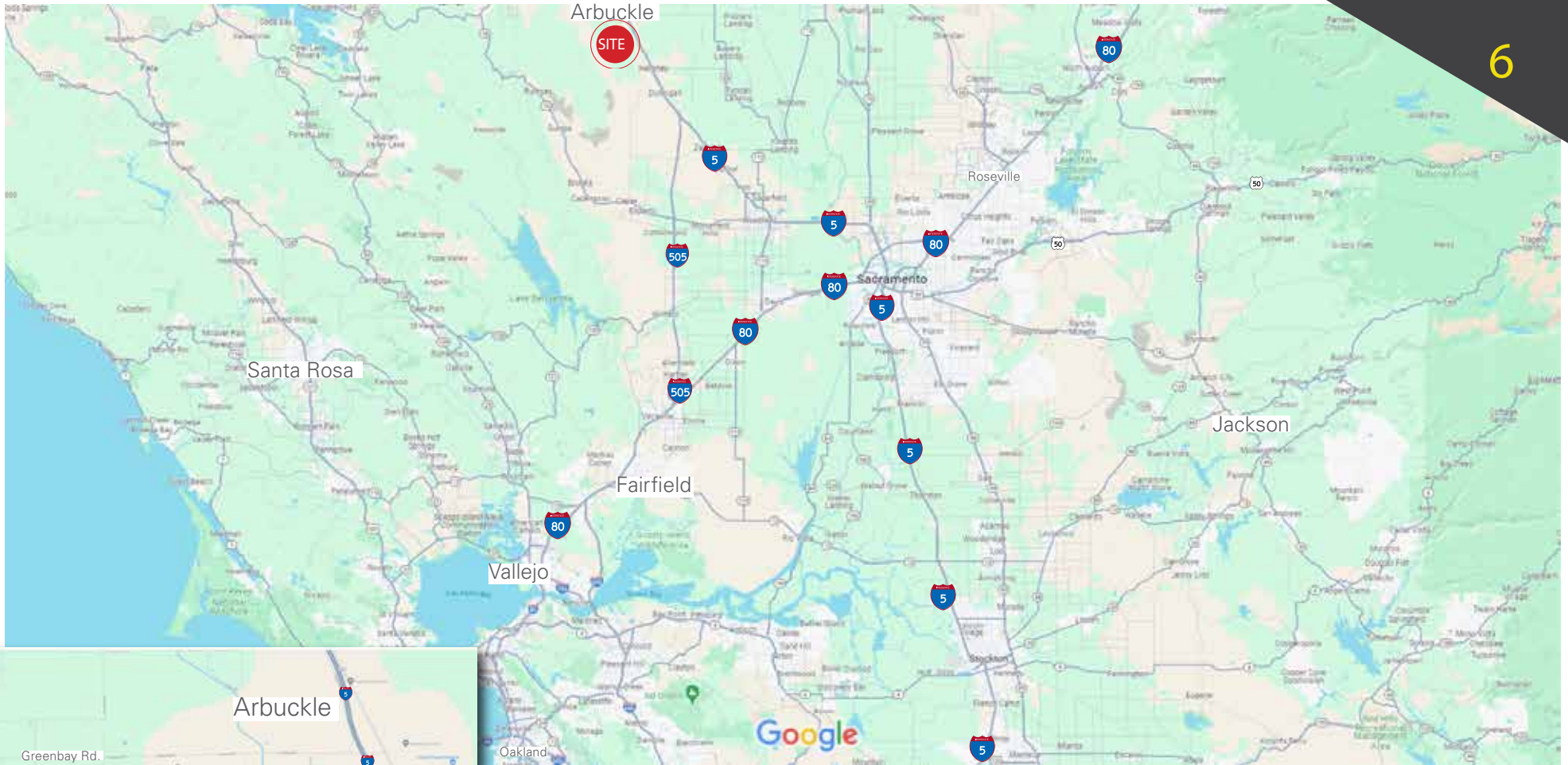



10 acre orchard

LOCATION MAP

FOR SALE
Arbuckle Vicinity
2 Parcels-39 Acres

6



Map data ©2023 Google 5 mi 

NEWMARK

FOR SALE - ARBUCKLE VICINITY, COLUSA COUNTY, CALIFORNIA

MATURE PRODUCING ALMOND ORCHARDS

2 Parcels ~ ±39 Acres Total



WILL BLUCHER

Managing Director

t 916-569-2340 / will.blucher@nmrk.com

CA RE LICENSE #01811673

KEN NOACK, JR.

Senior Managing Director

t 916-747-6442 / ken.noack@nmrk.com

CA RE LICENSE #00777705

The distributor of this communication is performing acts for which a real estate license is required. The information contained herein has been obtained from sources deemed reliable but has not been verified and no guarantee, warranty or representation, either express or implied, is made with respect to such information. Terms of sale or lease and availability are subject to change or withdrawal without notice. 23-0554 • 12/23

All images used are for illustrative purposes only and are intended to convey the concept and vision for the assets. They are for guidance only, and do not necessarily represent a true and accurate depiction.

NEWMARK

980 Ninth Street, #2500, Sacramento, Ca. 95814 | 23-0554•12/2023